



**ibs** *Integrated Solutions*  
*Your Need Our Focus*

**CUSTOMIZED SPACE / STORAGE SOLUTIONS**

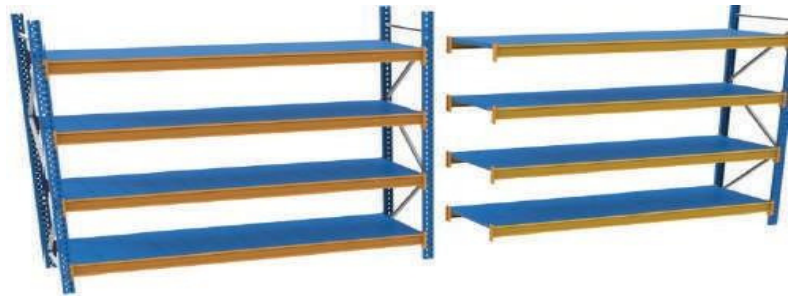
# LIGHT DUTY SHELVING

Long Span Shelving (LSS) is a product used for storing light and medium heavy goods, ranging from 150 kgs to 600 kgs. Ideal for products longer than 1300mm and load per level greater than 200kgs. Thus the product fits in the intermediate category between the Universal Storage System (USS) and Pallet Storage System (PSS). Euro Pallets (1000 x 800mm) can be stored under the bottom level when the span is 2300mm.



Long span shelving can be used to store virtually anything, like

- Crates •Boxes •Rolls •Files •Packets •Corrugated boxes
- Paint cans • The list can go on almost endlessly, for products between the range of applicable size and weight



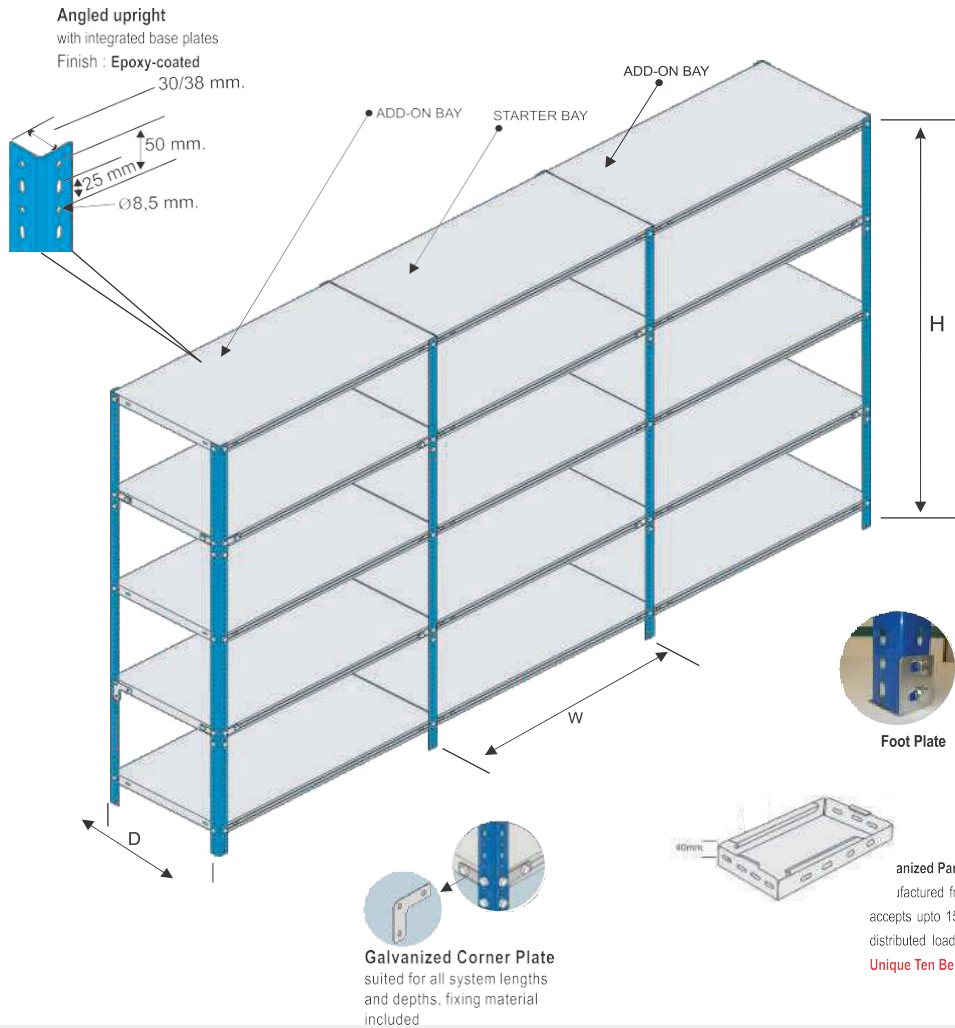
A versatile shelving for storing long and odd sized components

Frame height (mm)	Shelving depth (mm)	Beam span (mm)	Max load/level (kg)
2000, 2500, 3000	600, 800, 1000	1800, 2500, 2700	500 & 600



# SLOTTED ANGLE RACKING

USS is ideal for Uniformly Distributed Loads (UDL) up to 250 kg per level. A single starter bay of 4 levels can take up to 1000 kg (UDL). For loads from 300 kg to 600 kgs per level, LSS is recommended, and for loads from 500 kgs to 3000 kgs, PSS is suitable



Frame height (mm)	Shelving depth (mm)	Panel width (mm)	Max load/level (kg)
1850, 2150, 2450	400, 600	900, 1300	150



# PALLET STORAGE



# PALLET STORAGE

The most popular and economical system for pallet storage. Suitable for any type of pallet size and weight to optimize storage. This system can be designed to be serviced with any type of MHE starting from hand pallet trucks at floor level to electric stackers, reach trucks, forklift trucks, VNA forklift trucks etc.

Frame height (mm)	Shelving depth (mm)	Beam span (mm)	Max load/level (kg)
2150, 2650, 3150, 3650, 4150, 4650, 5650, 6150	600, 800, 1000, 1200	1400, 1900, 2300, 2700	1000, 1500, 2000

Racking pallet storage system



Racking pallet storage with decking panels



# HEAVY DUTY STORAGE SYSTEM WITH DECKING PANEL



**Optimum**



**Strength Anti-corrosive**



**Elegant design**

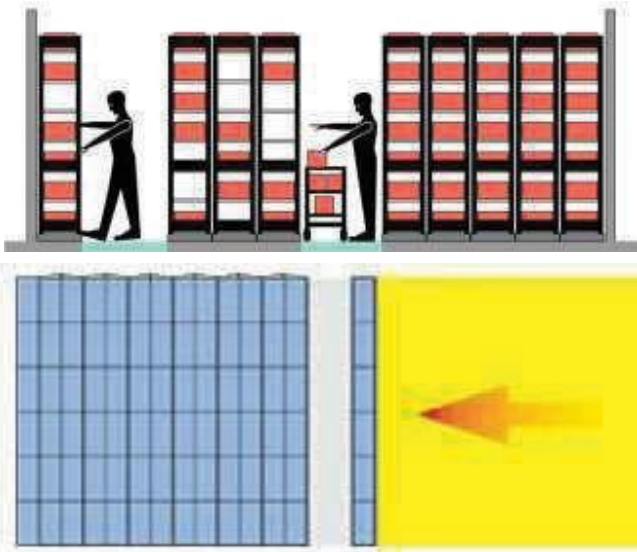
Frame height (mm)	Shelving depth (mm)	Beam span (mm)	Max load/level (kg)
2150, 2650, 3150, 3650, 4150, 4650, 5650, 6150	600, 800, 1000, 1200	1400, 1900, 2300, 2700	500, 1000



# MOBILE COMPACTOR STORAGE SYSTEM

Mobile Compactor System is based on the same components as a static system. Mounted onto light or heavy duty base units which can be moved in parallel direction to each other, the system only requires one aisle to provide access to all items in stock. Depending on the system, storage capacity increases between 100% and 180% respectively floor space occupation reduces by up to 50%. Useful for compact storage small space, the Mobile Compactor Systems are designed as per the floor space available and for storage and movement. Customer need is fully studied and solutions discussed prior to the recommendation. The NSS Mobile Compactor Systems are very compact and provide smooth mobility and an exclusive locking systems for the storage security.

Useful for Pharmaceuticals & Hospitals, Libraries & Educational Institute, Offices, Warehousing, Logistic Companies.

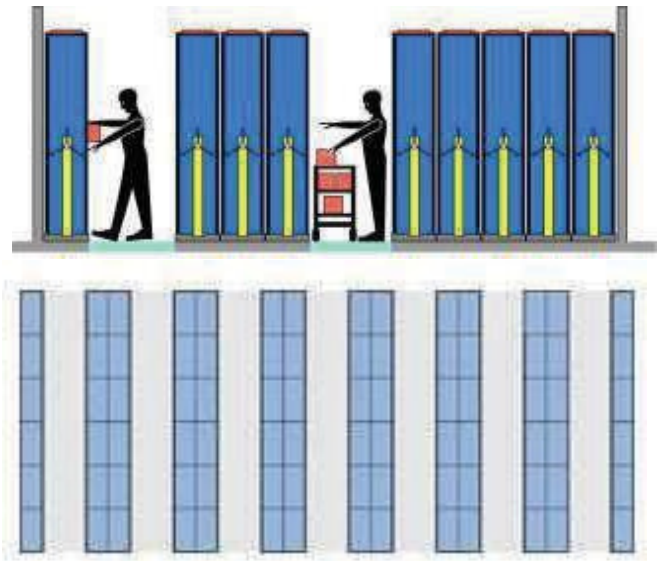


**Configuration 2** Static single rows (single sided

use) 6

Static double row (double sided use) Space requirement: 9,650 x 6,100 mm Floor space gained: 45%

Floor space utilization: 45%



**Configuration 2** Static single rows (single sided

use) 6

Static double row (double sided use) Space requirement: 5,300 x 6,100 mm Floor space gained: 45%

Floor space utilization: 85%

## Configuration

- Economic storage.
- Higher floor surface utilization. Increased storage capacity.
- Improved overview of all product lines on stock.
- Reduction of floor space costs as compared to static storage. Increase of storage capacity of up to 180% over static solutions. Good utilization of warehouse volume.
- Low cost solution.
- Base units accept different types of storage systems. Up to 50% less floor space occupied.
- Direct access to all items.
- Effortless manual operation with push handles or cranks.

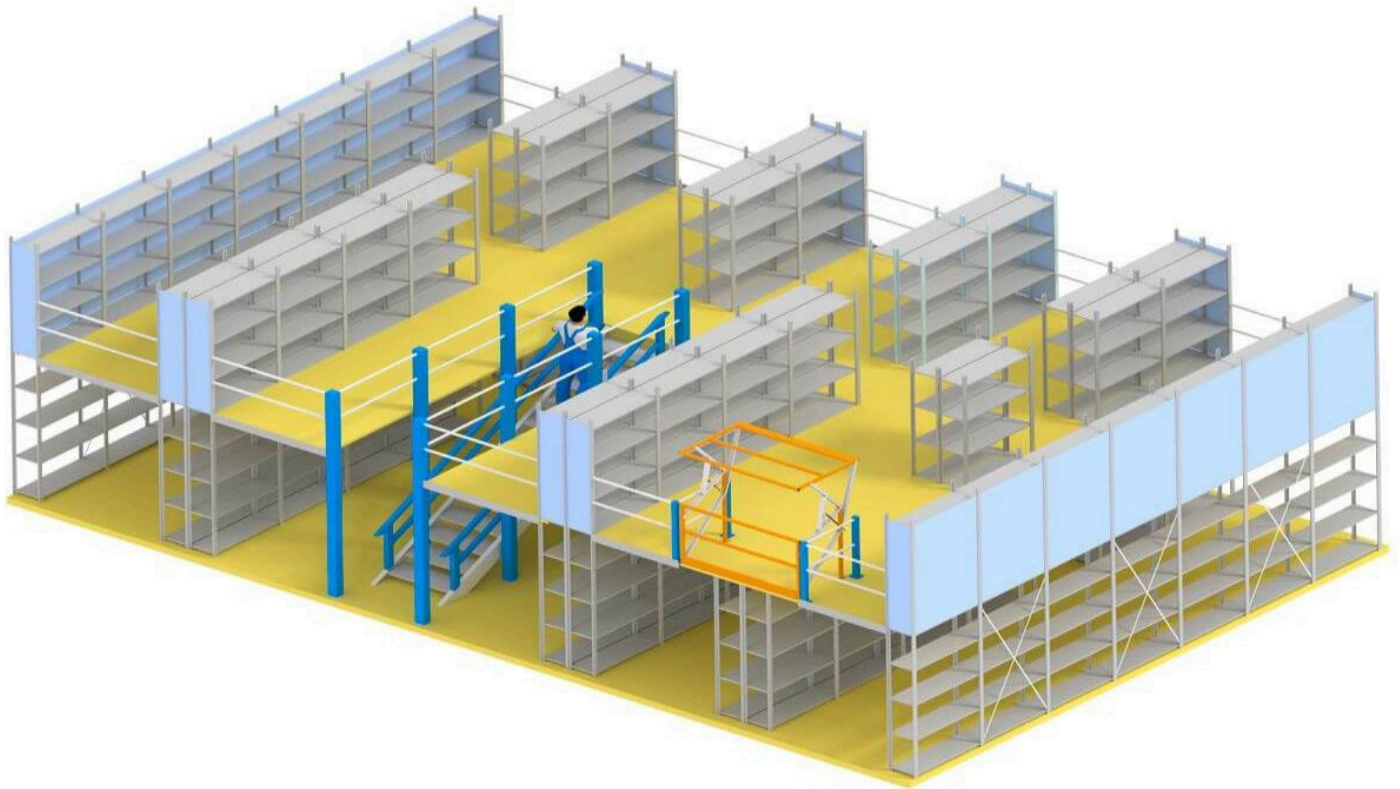
# MOBILE COMPACTOR



System height (mm)	System depth (mm)	System width (mm)	Max load/level (kg)
2150, 2550	375, 475, 600	1830, 2745	50- 100



## MEZZANINE FLOOR AND MULTI TIER



**ibs** *Integrated Solutions*

**S - 10, RAO COMPLEX, NEAR HYUNDAI, SHOWROOM, IMT  
MANESAR, GURUGRAM 123413**

Contact: **NK SINGH**

Phone: **+91 9810248973**

Email: **info@ibsis.in**